

Anti-Chicken IgG F(c) (Alkaline Phosphatase Conjugated) Secondary Antibody
Rabbit Polyclonal, Alkaline Phosphatase (Calf Intestine)
Catalog # ASR2943**Specification****Anti-Chicken IgG F(c) (Alkaline Phosphatase Conjugated) Secondary Antibody - Product Information**

Description	Anti-CHICKEN IgG F(c) (RABBIT) Antibody
Host	Alkaline Phosphatase Conjugated
Conjugate	Rabbit
Target Species	Alkaline Phosphatase (Calf Intestine)
Clonality	Chicken
Application	Polyclonal
Application Note	WB, E, IC
	ELISA 1:5,000;Western Blot
	1:500-1:2,500;Immunochemistry
	1:200-1:1,000
Physical State	Liquid (sterile filtered)
Host Isotype	IgG
Target Isotype	IgG F(c)
Buffer	0.05 M Tris Chloride, 0.15M Sodium Chloride, 0.001M Magnesium Chloride, 0.0001M Zinc Chloride, 50% (v/v) Glycerol; pH 8.0
Immunogen	Chicken IgG F(c) fragment
Stabilizer	10 mg/mL Bovine Serum Albumin (BSA) - Immunoglobulin and Protease free
Preservative	0.1% (w/v) Sodium Azide

Anti-Chicken IgG F(c) (Alkaline Phosphatase Conjugated) Secondary Antibody - Additional Information**Shipping Condition**

Wet Ice

Purity

This product was prepared from monospecific antiserum by immunoaffinity chromatography using Chicken IgG coupled to agarose beads followed by solid phase adsorption(s) to remove any unwanted reactivities. Assay by immunoelectrophoresis resulted in a single precipitin arc against anti-Alkaline Phosphatase (calf intestine), anti-Rabbit Serum, Chicken IgG, Chicken IgG F(c) and Chicken Serum. No reaction was observed against Chicken IgG F(ab')₂.

Storage Condition

Store vial at 4° C before opening. DO NOT FREEZE. This product is stable at 4° C as an undiluted liquid. Dilute only prior to immediate use. Freezing alkaline phosphatase conjugates will result in a substantial loss of enzymatic activity.

Precautions Note

This product is for research use only and is not intended for therapeutic or diagnostic applications.

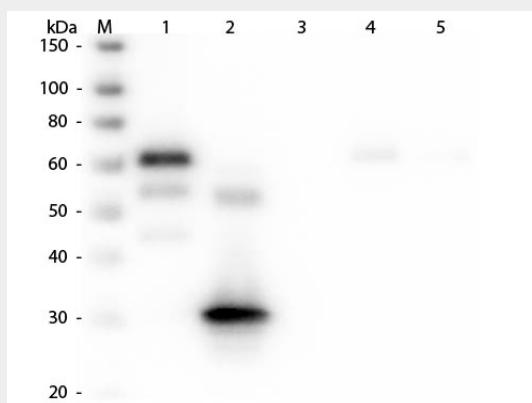
Anti-Chicken IgG F(c) (Alkaline Phosphatase Conjugated) Secondary Antibody - Protein Information

Anti-Chicken IgG F(c) (Alkaline Phosphatase Conjugated) Secondary Antibody - Protocols

Provided below are standard protocols that you may find useful for product applications.

- [Western Blot](#)
- [Blocking Peptides](#)
- [Dot Blot](#)
- [Immunohistochemistry](#)
- [Immunofluorescence](#)
- [Immunoprecipitation](#)
- [Flow Cytometry](#)
- [Cell Culture](#)

Anti-Chicken IgG F(c) (Alkaline Phosphatase Conjugated) Secondary Antibody - Images



Western Blot of Anti-Chicken IgG F(c) (RABBIT) Antibody . Lane M: 3 μ l Molecular Ladder. Lane 1: Chicken IgG whole molecule . Lane 2: Chicken IgG F(c) Fragment . Lane 3: Chicken IgG F(ab) Fragment . Lane 4: Chicken IgM Whole Molecule . Lane 5: Chicken Serum . All samples were reduced. Load: 50 ng per lane. Block: MB-070 for 30 min at RT. Primary Antibody: Anti-Chicken IgG F(c) (RABBIT) Antibody 1:2,000 for 60 min at RT. Secondary antibody: Anti-Rabbit IgG (GOAT) Peroxidase Conjugated Antibody 1:40,000 in MB-070 for 30 min at RT. Predicted/Observed Size: 25 and 72 kDa for Chicken IgG and Serum, 25 kDa for F(c) and F(ab), 75 kDa for IgM. Chicken F(c) migrates slightly higher.

Anti-Chicken IgG F(c) (Alkaline Phosphatase Conjugated) Secondary Antibody - Background

Anti-Chicken IgG Antibody detects specifically Chicken IgG F(c). Anti-Chicken IgG F(c) is ideal for investigators who routinely perform ELISA, Sandwich ELISA, titration assays, western-blot, immunoprecipitation and more generally immunoassays. Anti-Chicken IgG F(c) Antibody is ideal for investigators in Cancer, Immunology, and Microbiology research.